

WeatherStation

Gisborne Frost Forecast

Issued by: James Morrison
Hawkes Bay Forecast centre

Tuesday, 3 November 2015

Situation

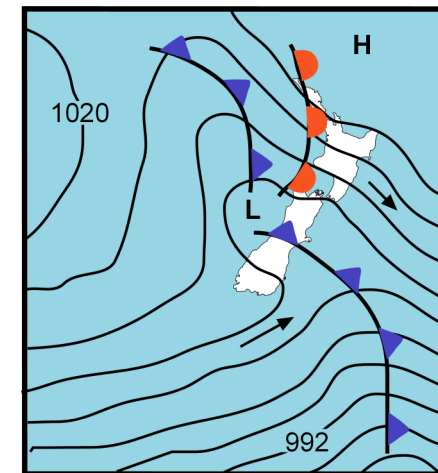
A very cold southerly change spreads up the South Island today and reaches the North Island tomorrow morning. A ridge of high pressure builds over Southland and Otago on Wednesday and Thursday but the flow turns southeast over Hawkes Bay and Gisborne and pushes a very humid airstream onshore through until Friday.

Tonight

Thick high cloud overnight with mild northwest winds. Some rain develops around dawn.

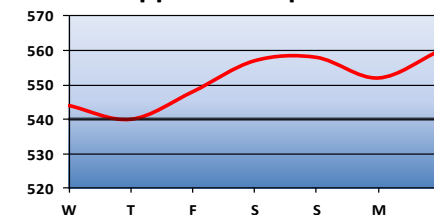
Tomorrow

Rain at times with cool southeast winds.



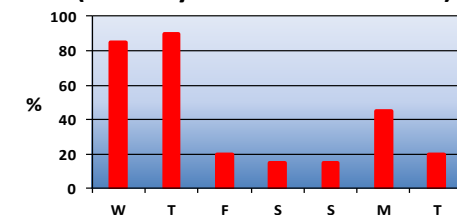
Prognosis map valid to midnight tonight

Thickness Levels
Upper Atmosphere



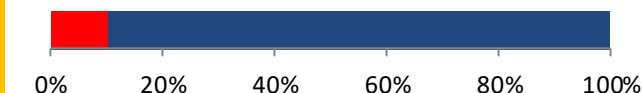
Cloud Cover

(% of sky covered 12am-6am)



Risk of frost tonight

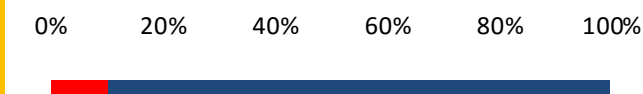
Low Moderate High Extreme



Minimum Temperature
Tonight Tomorrow night

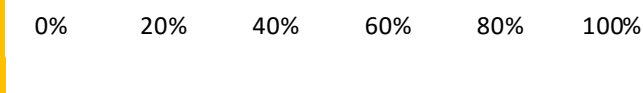
8.0 **7.0**

Gisborne



7.5 **6.0**

Ormond



8.0 **6.0**

Patutahi

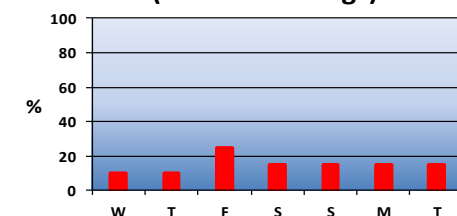
Local observations to 9am

Max Min Rnfl

Gisborne 22.3 12.7 0.0

Ormond 24.1 12.0 0.0

Overall Frost Risk
(next 7 mornings)



Long range frost risk indicators

These forecasts are provided as is and no guarantee can be given by Weatherstation as to their accuracy due to the nature of weather forecasting.

For further information or for specialised consulting enquiries please contact
James Morrison 06 878-7739 Mob 027 220-5562 email james@weatherstation.net.nz
© Weatherstation 2014

